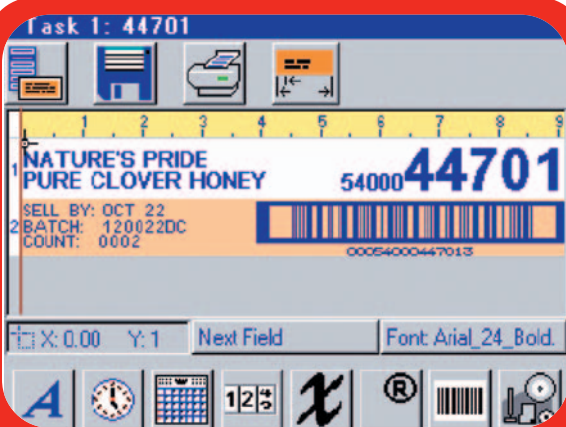
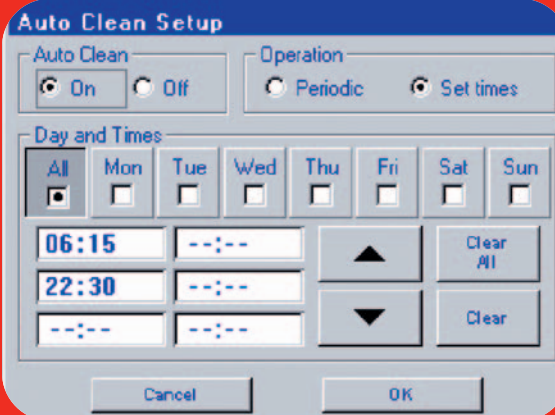




**High-Resolution** printing assures scannable bar codes and superior graphics and logos.



**Color** Touch Screen and Graphical User Interface make it easy to create and change messages.



**Simple Touch Screen** set-up for Automatic Cleaning System.

The world's smartest ink jet system, now with high-resolution printheads and automatic cleaning system.

### *features & benefits*

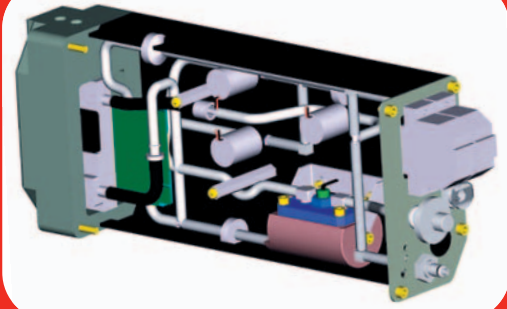
- Graphical User Interface and Color Touch Screen
- Automatic printhead cleaning
- One Liter of Ink supplies up to four printheads
- High-Resolution printing for bar codes and graphics
- Around-the-Clock diagnostics and system status
- Characters from 1/4" to 4" tall
- Print Speeds over 200 fpm
- Ethernet and Serial communication ports
- Stores up to 500 messages



# Specifications **Ij3000™** Impulse Jet large character ink jet printer

## Printheads

Types:	IJ768* (4"), IJ384* (2"), IJ224 (3/4") *with automatic cleaning
Print Speed:	Over 200 fpm (up to 60.8 mpm)
Print Lines:	Up to 10 lines at 200 fpm
Orientation:	Side, top, and bottom
Ink Throw Distance:	Up to 1/4" (6 mm); 1/8" (3 mm) recommended
Dimensions:	2.75" W x 5" H x 11.95" L (70 mm x 127 mm x 304 mm)



**Ij3000 Impulse Jet** utilizes proven high-resolution printhead technology with the extra feature of automatic printhead cleaning.

## Controller

Enclosures:	Stainless steel
User Interface:	Graphical User Interface, 70-key QWERTY keyboard, 640 x 480 color LCD touch screen, 10.4" diagonal
Communication Ports:	RS-232 (2), 10 Base-T Ethernet (1)
Connectivity:	Embedded Web server allows remote access with Web browser
Auto Codes:	Time, Sell By, Gregorian Date, Julian Date, Rollover Time, Shift, When Printed, Count
Memory:	3 MB flash type; 500 messages, 64 characters in length
Fonts:	Arial style: 5, 7, 9, 15, 24, 32, 48, 63, 96, and 128 pt.
Logos:	.BMP files
Bar Codes:	UPC-A, SCC-14, ITF, Code 39, Code 128, 2 Dimensional
Electrical:	90-260 VAC, 50/60 Hz, 3 A max. (power supply input); 24 VDC, 3 A per interface card (controller input)
Product Sensor:	24 VDC, current sinking, active low type
Encoder:	5000 ppr/300 ppi, TTL level, 24 VDC
Temperature/Humidity:	50° F to 104° F (10° C to 40° C); 5-80% (non-condensing)
Dimensions/Weight:	13" W x 8.75" H x 15.5" D; 16.4 lbs. (331 mm x 222 mm x 394 mm; 7.5 kg)
Safety:	UL, CE, CSA

## Ink Delivery System & Inks

Enclosures:	Stainless steel
Electrical:	Non-European: 103-122 VAC, 60 Hz, 1 A max. European: 207-253 VAC, 50 Hz, 0.5 A max.
Ink Filtration:	25 micron built-in supply reservoir
Operating Pressure:	Approx. 0 - 30 psi (pump output when operating)
Cable Ports:	Communication to controller, power cord, ink status beacon
Ink Tubing:	Max. 70 ft. horizontal, 20 ft. vertical tube length
Dimensions/Weight:	4.61" W x 20.42" H x 7.13" D; 18 lbs. (117 mm x 519 mm x 181 mm; 8 kg)
Types of Inks:	Dye type and pigmented type for porous substrates
Ink Colors/Supplies:	Black, 500 ml or 1 liter for up to four printheads

## Options

I/O Board:	8 isolated inputs and outputs for system controls & alarms
Multi-Tier Alarm Beacon	Up to 3 color and audible alarms
Network Software	Ethernet-based, view status, control all production lines, databases

For more information on all Diagraph products, consumables, service, parts and inks, please visit our website:

[www.diagraph.com](http://www.diagraph.com)

 **Diagraph**  
An **TW** Company

1 Missouri Research Park Drive • St. Charles, MO 63304 • Phone: 800-722-1125 • Fax: 636-300-2004  
Equipment Sales: 800-722-1125 • Service, Parts & Inks: 800-526-2531

© 2007 Diagraph • Printed in U.S.A. • SWIFT • 3/07 • 5M